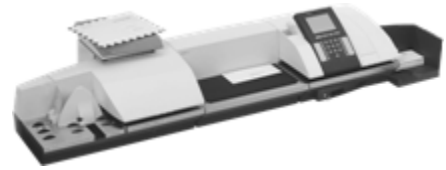


# HASLER



## **PowerPost January 2010 Rate Memory Card Update**

Dear Valued Hasler Customer,

Effective January 4, 2010, the United States Postal Service will be changing their shipping service prices which include Express Mail, Priority Mail, and other shipping services. This rate change does **not** affect First Class, Standard Mail, Parcel Post, and other mailing service prices.

Enclosed with this letter, you will find a rate memory card which when installed, will update your PowerPost mailing system (and attached weighing platform and/or dynamic scale) to provide you with the newest rates as defined by the USPS.

Please do not install the new rates until January 4, 2010. Installing the new rates is a simple process that should take less than five minutes. Before installing the new rates, please review the enclosed installation instructions (steps 1 – 6). After the new memory card is installed, please return the old rate memory card in the prepaid, self-addressed padded envelope that arrived with this letter (step 7).

**Please Note:** It is the sole responsibility of the customer to install and verify that the rates are properly installed. Neopost USA will not be liable for rates that were not verified or installed properly.

For any administrative or technical questions regarding the January 4, 2010 rate change:

- Visit our website at: <http://www.haslerinc.com/rate> for updated rate change developments or the USPS website at: <http://www.usps.com/prices>.

- Contact your authorized local Hasler representative. To obtain the contact information for your authorized Hasler representative please visit us at: [www.haslerinc.com](http://www.haslerinc.com).

Or contact us directly at: 1-800-636-7678.

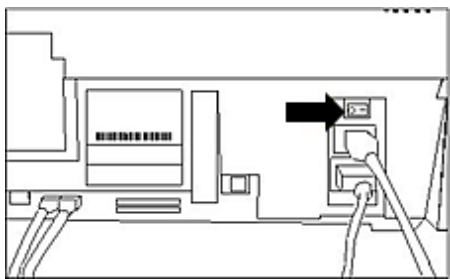
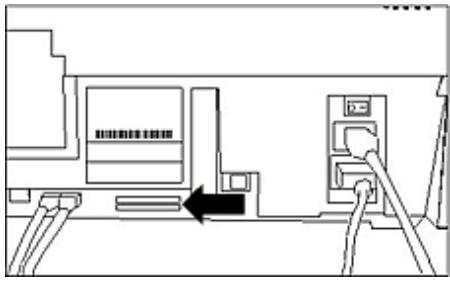

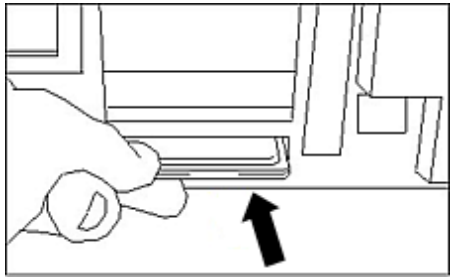
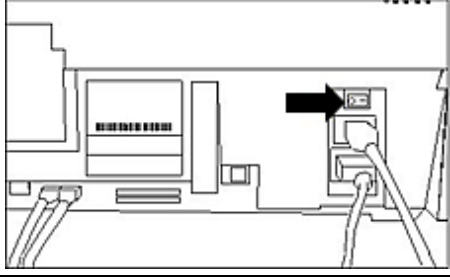
Please have your product model number, product serial number, and customer account number available so that our representatives can properly assist you.

We appreciate being your mailing system provider of choice and look forward to a long and rewarding business relationship.

Sincerely,

The Hasler Rate Change Team

## PowerPost Mailing System - Rate Installation Procedure - USPS - January 2010

Step	Action	Figure
1	<p>Turn the power switch, located at the back of the base, to the <b>OFF</b> position.</p> <p><b>Note:</b> If the rate card is removed from the scale or installed with the power on, severe damage may occur to the PowerPost.</p>	
2	<p>The current Rate Memory Card is located to the left of the power switch (shown).</p>	
3	<p>To release the memory card, press the black button to the left of the cards.</p> <p>The rate card to replace will have "RCM", "Rate" or "DPFM" written on it.</p> <p><b>Note:</b> You only need to change one card to update your rates. However, check both cards to assure you have the correct one.</p>	
4	<p>Insert the new Rate Memory Card. Ensure the Memory Card is inserted all the way in and that the black button pops out.</p> <p><b>NOTE:</b> It does not matter which slot the Rate Memory or ASM Cards are inserted.</p>	
5	<p>Turn the power switch, located at the back of the base, to the <b>ON</b> position.</p>	
6	<p>The new rates have been successfully loaded.</p>	
7	<p><b>Return the old rate Memory Card</b> in the prepaid, self addressed padded envelope that arrived with this letter.</p> <p>This rate change does <b>not</b> affect First Class, Standard Mail, Parcel Post, and other mailing service prices.</p>	